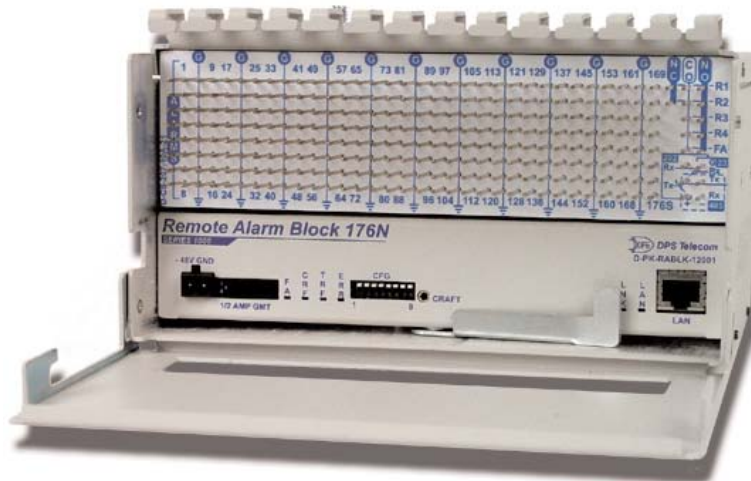


Remote Alarm Block 176N

Compact, High Capacity, Ethernet Alarm Collection Remote



176 discrete alarms, 4 controls, standard wire wrap terminations and LAN connectivity: the RAB 176N is the optimum combination of large capacity in a compact form.

Features

- **176 discrete alarm inputs and 4 control relays**
- **Standard wire wrap terminations**
- **Mount on wall or place two in a rack to collect 352 alarms in a 3 RU space**
- **Supports SNMP, DCP, DCPf, DCPx, and DCP1**
- **Report alarms via LAN or serial port**
- **Supports simultaneous SNMP/DCP alarm reporting**
- **Selectable alarm qualification times**
- **Real-time clock for accurate date/time stamp**
- **FREE Windows 2000/XP software for configuration, monitoring, diagnostics and testing**
- **FREE lifetime firmware upgrades**
- **Two-year warranty**
- **24-hour tech support**
- **30-DAY NO-RISK MONEY-BACK GUARANTEE**

Overview

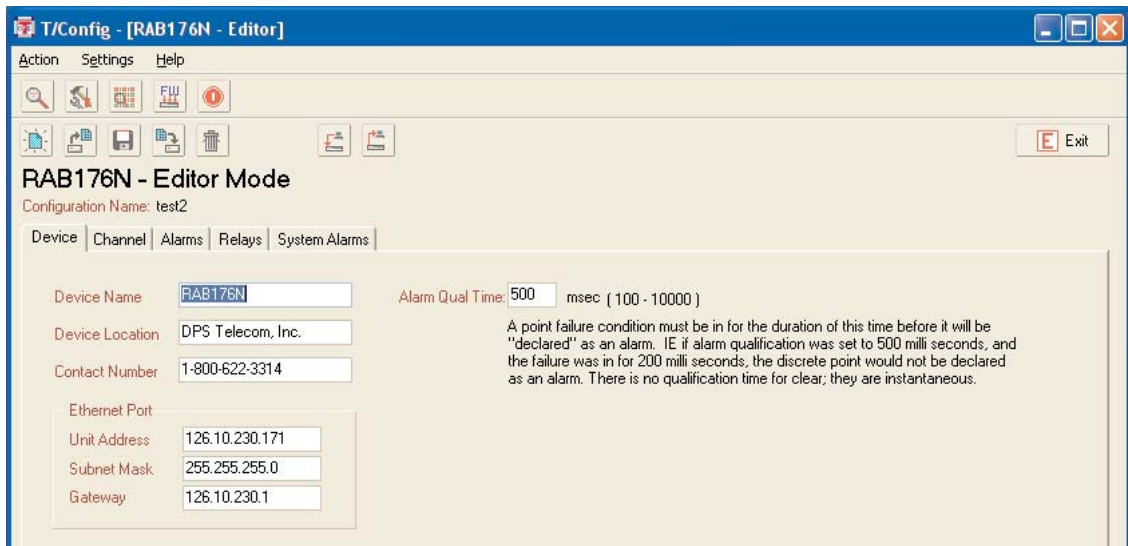
The Remote Alarm Block 176N is a compact, high-capacity, SNMP/DCP alarm collection remote with Ethernet connectivity and standard wire-wrap terminations for alarm inputs. The RAB 176N collects 176 reversible alarm points, connects anywhere there is network access, and you can mount in a wall—or you can fit two side-by-side in a rack to collect 352 alarm points in a 3 RU space.

The RAB 176N provides high-capacity alarm monitoring while retaining rack space for revenue-generating equipment, making it the ideal RTU for any site with many alarms and limited space. And the RAB's standard wire wrap terminations for alarm inputs make the unit a natural fit for any telecommunications site where distribution frames are used.

The RAB 176N reports alarms as SNMP traps over UDP/IP, and supports alarm polling via DCP, DCPf, DCPx, or DCP1 over UDP/IP, TCP/IP, RS-232, or RS-485.

Both the SNMP and DCP channels can operate at the same time, so the RAB can report alarms simultaneously to multiple SNMP managers and the T/MonXM Network Alarm Management System.

In addition to its 176 discrete alarm inputs, the RAB 176N has 4 control relays, 2 Form A and 23 Form C. Using the control relays, you can reboot remote devices, start backup equipment, and open security doors directly from your SNMP manager or NOC, saving expensive windshield time.



Easy, efficient configuration: The included Windows 2000/XP software utility supports configuration, monitoring, turn up and testing operations.

To reduce nuisance alarms, the RAB 176N features user-set alarm qualification times of 100 to 10,000 milliseconds. The RAB also supports an internal real-time clock, so date/time stamps in SNMP traps are always correct.

Configuration is easy and trouble-free using T/Config, a Windows 2000/XP utility included free with your Remote Alarm Block. Using T/Config, a technician in the field can configure, provision, and turn up the unit, and also monitor alarm points, operate control relays, analyze communications traffic, and load firmware upgrades.

Firmware upgrades are free for the lifetime of the unit. Hardware upgrades are literally a snap. If the hardware module of your RAB ever needs to be replaced, you can remove the module without disconnecting a single wire.

Best of all, with the Remote Alarm Block, you'll get the full client support of DPS Telecom, rated the best in the industry, including 24-hour technical support and a two-year warranty. And like all DPS products, the Remote Alarm Block is backed by DPS's 30-Day No-Risk Guarantee.

Specifications

Protocols:	SNMP DCP, DCPf, DCPx, DCP1	Dimensions:	4" H x 8" W x 5" D (10.2 cm x 20.3 cm x 12.7 cm)
Discrete Point Inputs:	176 (reversible)	Weight:	4 lb (1.8 kg)
Alarm Detection Speed:	Configurable to 100–10,000 msec	Mounting:	Wall mount or 19" or 23" rack
Control Outputs:	4	Power Input:	–48 VDC (–40 to –70 VDC) dual feed
Maximum Voltage:	60 VDC/120 VAC	Current draw:	50 mA
Maximum Current:	1 Amp AC/DC	Fuse:	½ Amp GMT
Interfaces:	1 RS-232 or RS-485 serial port (depending on ordering options) 1 RJ45 10BaseT Ethernet port 1 stereo jack craft port	Operating Temperature:	32° to 140°F (0° to 60°C)
Visual Display:	6 bicolor LEDs	Operating Humidity:	0% to 95% noncondensing
		Windows 2000/XP Configuration Utility Included	
		Downloadable Firmware	

Ordering Options

RS-232 Serial Port
RS-485 Serial Port

 **Call 1-800-622-3314 for Pricing**

All units are custom built to order. Allow 2-4 weeks for delivery.

All DPS Telecom products are backed by our 30-Day, No-Risk Guarantee:

“If you buy our equipment and are not satisfied for any reason during the first 30 days, simply return it for a full refund.”

Visit our website at www.dpstelecom.com

4955 East Yale Avenue, Fresno, California 93727 • 800-622-3314 • Fax 559-454-1688